

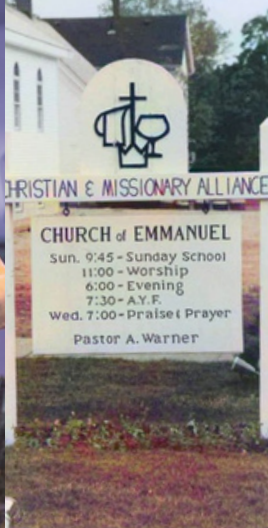


church of
EMMANUEL



**FORWARD
IN FAITH**

Expanding our Gospel Impact



*"For the Lord is good. His unfailing love continues forever,
and His faithfulness continues to each generation."
Psalm 100:5*

TABLE OF CONTENTS

A Word from Pastor Steve	6
One Vision, Two Initiatives	7
Initiative 1: Campus Expansion	8
Initiative 2: Start a New Church	14
Timeline	16
Cost	18
What is My Part to Play?	19
Frequently Asked Questions	20
Important Dates	21
Pray with Us	22
Creative Giving	24
My Commitment	26

EMMANUEL

main office

A WORD FROM PASTOR STEVE

Psalm 100:5 says, “For the Lord is good. His unfailing love continues forever, and His faithfulness continues to each generation” (NLT).

For almost 120 years, Church of Emmanuel has been on the front row of this truth, as generation after generation has experienced God’s faithfulness. For over a century, the gospel, the good news of Jesus, has been preached and lived out through this local faith community. Lives have been changed. Families have been restored. Communities have been blessed. God’s Kingdom has been expanded. And I truly believe God is only getting started. He continues to bring more and more people into our faith community, as hundreds of people take their next steps of faith in their journey. God continues to be on the move here at Emmanuel, and we want to move with Him.

This is a historic moment in our church’s long history. We are experiencing incredible growth, both in numbers and in faith. What an exciting time to be a part of Emmanuel. We want to continue to be faithful to God and His vision for us as His church.

Over the past four years, God has been setting the stage for what He has next for His church at Emmanuel. The time has come for us, in this generation, to step out in faith once again and live out His calling for us, experiencing His faithfulness in new and fresh ways.



The apostle Paul reminds us in 2 Corinthians 5:5-7 that “God has prepared us for this calling by way of the Holy Spirit... for we walk by faith, not by sight.” Through the power and guidance of the Holy Spirit, we will move forward into the unknown, not blindly, but with faith. Faith in a God who is always faithful. Faith in a God who specializes in turning the impossible into the possible. Faith in a God who has called us to something bigger than ourselves for His glory.

It is going to take faith from all of us. A collective, supernatural, God-filled faith that will guide us to do more than we could ever do on our own. In fact, I firmly believe God is calling us to a vision so big that God has to be in it for it to become a reality. This is exactly where He wants us to be: fully dependent upon Him. After all, He is a God of miracles - always has been and always will be. May we, as a church, continue to move forward in faith and allow God to get all the glory.

Pastor Steve

One Kingdom **Vision**,
Two Kingdom **Initiatives**

OUR VISION

To expand our Gospel Impact in New England

INITIATIVE 1

Campus Expansion

INITIATIVE 2

Plant a New Church

INITIATIVE 1: CAMPUS EXPANSION

As Emmanuel grows in size and impact, our facilities are quickly running out of room. As part of our Forward in Faith initiative, we will be undergoing a building expansion and renovation of our existing facilities.

- A brand-new 3,600 ft² **Multipurpose building** that will serve as **cafe, event, classroom, and lobby space**.
- Expansion of our existing sanctuary to add **40% more seating capacity** and nearly 1,000 ft² of space
- Increased **classroom space** and **security** in **Kids wing**
- Substantially larger **Youth Space**
- Increased **parking capacity**
- Updating existing infrastructure to be compliant with the **Americans with Disabilities Act** and the **MA State Building Code** (which means a larger elevator, accessibility ramps, fire sprinkler system, etc)



Multipurpose building





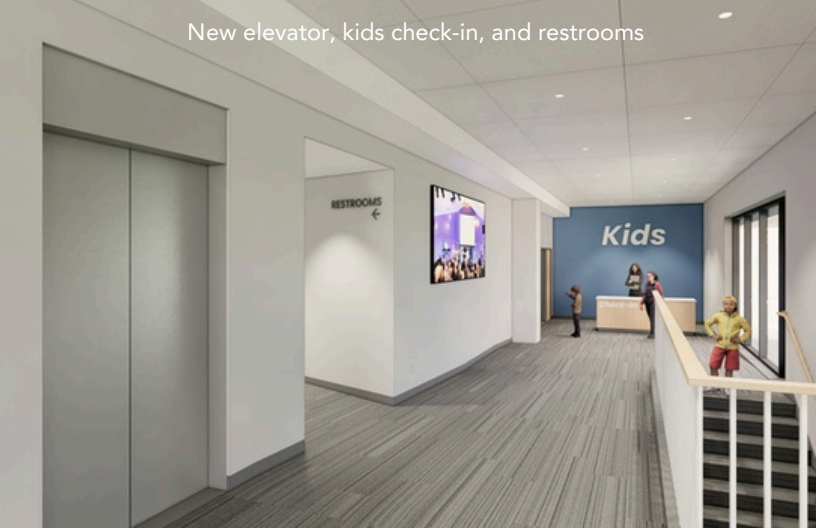
New foyer



Rear entrance



Expanded sanctuary space



New elevator, kids check-in, and restrooms

DOWNSTAIRS



Downstairs Lobby



Entrance to Youth Space

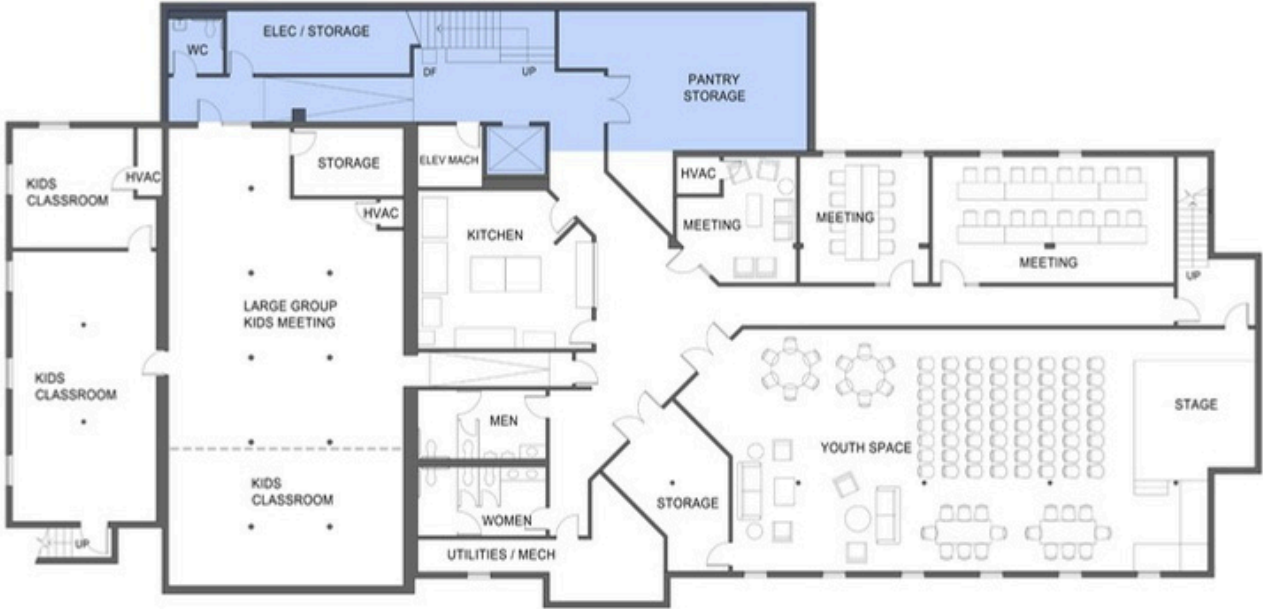


New classrooms



New Youth Space

FLOOR PLAN DOWNSTAIRS



INITIATIVE 2: START A NEW CHURCH



WHY PLANT CHURCHES?

The Calling: Jesus said, “As the Father has sent me, so I am sending you” (John 20:21). Our mission as disciples of Jesus is to preach the gospel to the unchurched and unreached people God has placed in our lives.

The Strategy: Planting new churches across New England is a crucial opportunity to preach the Gospel and help people grow in their faith. We want to be a church that plants churches, prioritizing Gospel growth over our own church’s numerical growth.

The Cost: Planting churches requires us to generously share what God has entrusted to us—our members, our resources, our leadership, and the fruit of our ministry—so that the Gospel will spread throughout our region.

WHAT IS THE NEW CHURCH'S MISSION?

We are sending a team of families led by Luke and Dana Proctor to launch a new church in the Medfield-Westwood area. We consider this team a group of missionaries, called by Church of Emmanuel to preach the Gospel. The church plant will be a community committed to worship and outreach, celebrating God's presence in all of life. Launching in January 2027, it will function as an independent congregation of the Christian & Missionary Alliance.



TIMELINE

Capital Campaign
February 22 - March 29 2026

Blueprints
May - July 2026

Breaking Ground
Fall 2026

Building Expansion Complete
Fall 2027



Dates, particularly regarding construction projects, are subject to change.



A photograph of a church service, dimly lit with blue tones. In the foreground, the backs of several people's heads and shoulders are visible as they sit in pews. In the background, a man in a dark suit stands at a podium, gesturing with his right hand. A large screen behind him displays a landscape image. The ceiling features several stage lights and a chandelier.

Our Goal:

\$7.5 MILLION

(total cost of building project, facilities upgrades,
furnishings, and church plant startup)

WHAT IS MY PART TO PLAY?

We are asking everyone who calls Emmanuel home to prayerfully consider sacrificially contributing to our Capital Campaign over the next three years, above and beyond normal giving.



FREQUENTLY ASKED QUESTIONS



WHY BOTH INITIATIVES AT THE SAME TIME?

Over the past three years, God has been moving in ways we never expected. Seeds that were planted years ago are now coming to fruition through these two initiatives. We believe this reflects God's timing and His leading in our church. As we sense spiritual momentum and direction from Him, we want to faithfully follow where He is guiding us.

WHO HAS BEEN INVOLVED WITH THIS PLAN?

This effort has been led by our pastors, elders, staff, governing board, feasibility team, capital campaign leadership, church plant team, and building team. More than 50 people have been directly involved throughout the decision-making process!

WHAT IF WE DON'T RAISE THE FULL AMOUNT NEEDED?

Our Elder Team has prayerfully agreed that we will begin by securing a construction loan. We are working with Orchard Alliance to pursue a campaign-friendly loan that fits responsibly within our current budget. They are helping us determine our ability to make payments without compromising our financial health. Our existing loan will be rolled into the new one, which will also help us pay it off more efficiently over time.

HOW MANY PEOPLE ARE ON THE CHURCH PLANT TEAM?

We will plant this church with a launch team of approximately 15 families led by Luke and Dana Proctor.

HOW ARE WE HELPING THE LAUNCH TEAM?

In addition to sending Pastor Luke and the launch team, we will financially support the plant during its first three years. Funds will go towards startup costs, staff salaries, and local outreach projects.

IMPORTANT DATES

February 22 Vision Sunday

During all three services at 8:30, 10:00, and 11:30am, we will share the exciting news and reveal God's next steps for the future of our church, including the details. This is about honoring our past, celebrating God's faithfulness, and stepping boldly into the next chapter He is writing for Emmanuel.

February 25 & March 3 Q&A Sessions

We know there are many pieces to the Forward in Faith Campaign so the Q&A Sessions are designed to help you process them. Both gatherings give an opportunity to walk through the vision, clarify the moving parts, and better understand both the heart and the practical steps behind our two initiatives.

March 13 Early Commitment Dinner

An opportunity for highly invested congregants at Emmanuel to hear more details about the vision of the Forward in Faith Campaign and to learn creative ways to sacrifice to God in support of this campaign. This is an early chance to learn more and prayerfully consider the part you might play as we move forward.

March 14 Early Commitment Lunch

Similar to the Early Commitment Dinner, this is an opportunity to hear more details about the vision of the Forward in Faith Campaign. In addition to hearing creative ways to sacrifice to God, we will share information related to appreciated assets and retirement funds that may present significant tax benefits. This is an early chance to learn more and commit to prayerfully consider the part you might play as we move forward.

March 29 Commitment Day

Commitment Day is a significant moment in the life of our church. During our Sunday morning services, we will prayerfully submit our commitment cards and dedicate our gifts to the Lord, committing to give sacrificially over the next three years. More than a financial step, it is an act of trust, unity, and shared investment in our church's future.

April 12 Celebration Sunday

Celebration Sunday is a day of thanksgiving in the life of our church. During our morning worship services, we will share the total amount pledged through our commitments and praise God for His faithfulness. Together, we will celebrate His provision and look ahead with gratitude and hope as we enter this new chapter.



PRAY WITH US

Scripture shows us that God's people **begin their greatest works with prayer**. **Nehemiah** fasted and prayed before rebuilding Jerusalem. **Solomon** sought God's wisdom before constructing the temple. Even **Jesus** prayed in Gethsemane before going to the cross, surrendering fully to the Father's will.

As we step forward in faith to expand and restructure our worship spaces in support of Church of Emmanuel and our church plant, we want every plan to be **shaped by God's will** and every effort consecrated to His purposes. Psalm 127:1 reminds us, "Unless the Lord builds the house, those who build it labor in vain." While this Capital Campaign will build what can be seen, only God builds what endures.

In the weeks ahead, we invite everyone connected to Emmanuel to **pray** for God's guidance, blessing, and provision over this project.

HOW YOU CAN GET INVOLVED:

- **21 Days of Prayer** - We invite our church family to commit to 21 days of intentional prayer over this new work. A booklet of 21 devotionals will be provided to help guide us as we pray together over the many needs, decisions, and opportunities connected to our expansion projects.
- **Small Groups** - During the month of March, small groups will engage in lessons connected to Pastor Steve's sermon series on Stewardship and pray over the vision and the work before us.
- **Congregational Prayer** - Each worship service during the month of March will include a prayer moment to focus our hearts on this vision and this work that God is doing through Church of Emmanuel, reminding us that this work is His work, not ours alone.
- **Daily Prayer Together** - We invite everyone to pray for this vision and the people involved at 1:05 PM daily. As we pray at the same time, our hearts and voices will rise together before God in unity and dependence on Him.
- **Prayer Wall** - Similar to the Hope Tree Project, the prayer wall in the church lobby displays specific prayer requests for each element of this initiative. We invite you to take a slip of paper from the wall and lift that need before the Lord throughout the week.



CREATIVE GIVING

Want to contribute but aren't sure you have the resources to make a difference?

Giving from income is often the primary response to contributing to stewardship campaigns. In addition to giving income, you can convert non-cash items into cash donations to give.

ADDITIONAL WAYS YOU CAN GIVE:

- Donate stocks/securities directly to the church
- Contribute proceeds from selling non-cash items (land, a vehicle, collectibles/sports memorabilia, jewelry, etc)
- Dedicate an upcoming raise/bonus
- Reduce discretionary spending
- IRA Qualified Charitable Distributions (for individuals over the age of 70^{1/2})

How does this work?

If you find that you have a non-cash asset that you would like to contribute to the capital campaign, it is preferred, if possible, that you sell the item and donate the proceeds to Church of Emmanuel, except in certain rare situations for tax considerations.

SACRIFICIAL GIVING

What would you be willing to sacrifice for the next 3 years to build God's Kingdom?

- Bring **coffee from home** instead of Dunkin or Starbucks - \$5 per day
- Eliminate one **takeout lunch** a week - \$15 per week
- Is there a **monthly subscription or streaming service** you don't use or could live without? - \$20 per month
- Get **takeout dinner** twice a month instead of once a week - \$60 per month
- Reduce **discretionary spending** - \$40 per month

What does this translate to over a 3-year commitment?

Activity	1 Year	3 Years
Morning Coffee	\$1,300	\$3,900
Takeout Lunch	\$780	\$2,340
Monthly subscription	\$240	\$720
Takeout Dinner	\$720	\$2,160
Discretionary Spending	\$480	\$1,440
TOTAL	\$2,740	\$10,332

Special considerations:

If you would like to donate an asset such as shares of stock that have appreciated in value since they were acquired and would incur taxes if sold, contact the church about transferring ownership of the asset. As a tax-exempt organization, Church of Emmanuel can sell the asset without incurring the capital gains tax, thereby maximizing your gift.

Disclaimer:

Church of Emmanuel does not provide appraisals for donated assets. If you plan to use your contribution as a tax write-off, you are responsible for obtaining your own appraisal. Church of Emmanuel does not offer tax advice; it is important to consult your own tax professional before making any decisions.

MY COMMITMENT

In celebration of God leading us through this journey, our church family will turn in commitment cards together on March 29 during our morning worship services. In doing so, we will put our faith into action and watch God fulfill His vision for our church. On Sunday, April 12, we will share the results of our efforts and give thanks to the Lord. *Your commitment card is not a binding contract*, but rather a declaration of your intentions, which will help the church plan.

Ways to submit your commitment cards:

- **In Person.** Turn in your commitment cards with your Emmanuel family on March 29.
- **Electronically.** Visit the campaign website found at www.thisisemmanuel.org/forward and submit your card electronically.

All commitments are strictly confidential.

COMMITMENT CARD



**FORWARD
IN FAITH**
Expanding our Gospel Impact

Understanding that all I/we possess is a gift from God, I/we rejoice in the privilege to participate in the Forward in Faith project.

MY/OUR THREE-YEAR COMMITMENT IS

\$ _____ Weekly x 156 weeks or
\$ _____ Monthly x 36 months or
\$ _____ As follows

\$ _____ **TOTAL**

COMMITMENTS OTHER THAN CASH

\$ _____ Approximate value of gift(s)

TOTAL COMMITTED

\$ _____

I/we will begin my/our gifts on _____

Name _____
Phone _____
Email _____

SIGNATURE(S)

Note: this is a statement of intent and may be altered as circumstances change.



Emmanuel's first public meeting space, ca. 1906
(Rent cost \$13/month)



First permanent facility, ca. 1920
(still in use today as the church office)



Second permanent facility
(currently used as our Kids Wing)



Concept art of the current
Emmanuel facility, ca. 1986



church of
EMMANUEL